

Ready for Early Access (Beta) Users



Automation to harden your physical security systems from cyber-security threats

Surveillance systems are mission-critical for many organizations, yet camera devices using default or easily guessed passwords can leave you open to security vulnerabilities. Compliance to many standards (PCI, NERC, NIST, etc) also requires ensuring your surveillance system can't be compromised.

Viakoo is offering beta access to an automated approach for verifying network-wide that no cameras are using default or easily guessed passwords

How It Works:

- Runs on-demand from Recording Server
- Looks for standard HTML authentication points
- If not present, explores a variety of common (known) URL entry points.
- Applies combination of known user/password combinations.

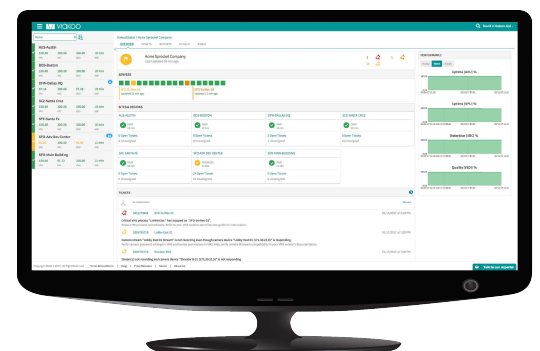
What is Analyzed/Reported:

Possible Outcomes for Each Camera Device:

- All combinations return failure (No Vulnerabilities Found)
- One (maybe a few) combination(s) with successful login. Control combinations fail (VULNERABLE)
- All successful (deeper analysis required)
- Test timed out (deeper analysis required)

On-demand reporting accessible within Viakoo portal

Reports can be generated on demand, or run on a scheduled basis



Example: Viakoo Dashboard

Camera Password Check Report for Site DFW-Dallas HQ
2/13/17 10:28

Status	Name	Password Check	Priority	IP Address	MAC Address	Manufacturer	Model	Reporter	Last Updated	Site
OKAY	Conf Room West 02	NO_VULNERABILITIES_DETECTED	NORMAL	172.30.21.21	00:1A:07:24:20:21	Arecont	Arecont	DFW-SvrRec-02	2/13/17 10:00	DFW-Dallas HQ
OKAY	Cubes 05	NO_VULNERABILITIES_DETECTED	NORMAL	172.30.21.4	00:50:1A:24:15:4	IQInvision	IQInvision	DFW-SvrRec-03	2/13/17 10:00	DFW-Dallas HQ
OKAY	Cubes 06	NO_VULNERABILITIES_DETECTED	NORMAL	172.30.21.5	00:50:1A:24:15:5	IQInvision	IQInvision	DFW-SvrRec-03	2/13/17 10:00	DFW-Dallas HQ
OKAY	Cubes 07	NO_VULNERABILITIES_DETECTED	NORMAL	172.30.21.6	00:50:1A:24:15:6	IQInvision	IQInvision	DFW-SvrRec-03	2/13/17 10:00	DFW-Dallas HQ
OKAY	Cubes 16	VULNERABLE	NORMAL	172.30.21.15	00:50:1A:24:15:15	IQInvision	IQInvision	DFW-SvrRec-03	2/13/17 10:00	DFW-Dallas HQ
OKAY	Cubes 09	NO_VULNERABILITIES_DETECTED	NORMAL	172.30.21.8	00:50:1A:24:15:8	IQInvision	IQInvision	DFW-SvrRec-03	2/13/17 10:00	DFW-Dallas HQ
OKAY	Cubes 17	NO_VULNERABILITIES_DETECTED	NORMAL	172.30.21.16	00:50:1A:24:15:16	IQInvision	IQInvision	DFW-SvrRec-03	2/13/17 10:00	DFW-Dallas HQ
OKAY	Cubes 08	NO_VULNERABILITIES_DETECTED	NORMAL	172.30.21.7	00:50:1A:24:15:7	IQInvision	IQInvision	DFW-SvrRec-03	2/13/17 10:00	DFW-Dallas HQ
OKAY	Cubes 10	NO_VULNERABILITIES_DETECTED	NORMAL	172.30.21.9	00:50:1A:24:15:9	IQInvision	IQInvision	DFW-SvrRec-03	2/13/17 10:00	DFW-Dallas HQ
OKAY	Training Room 01	NO_VULNERABILITIES_DETECTED	NORMAL	172.30.21.13	00:04:7D:24:30:13	Pelco	Pelco	DFW-SvrRec-01	2/13/17 10:00	DFW-Dallas HQ
OKAY	Training Room 04	NO_VULNERABILITIES_DETECTED	NORMAL	172.30.21.16	00:04:7D:24:30:16	Pelco	Pelco	DFW-SvrRec-01	2/13/17 10:00	DFW-Dallas HQ
OKAY	Training Room 05	CHECK_TIMEDOUT	NORMAL	172.30.21.17	00:04:7D:24:30:17	Pelco	Pelco	DFW-SvrRec-01	2/13/17 10:00	DFW-Dallas HQ
OKAY	Elevator B 02	NO_VULNERABILITIES_DETECTED	NORMAL	172.30.21.6	00:40:8C:24:20:6	Axis	Axis	DFW-SvrRec-01	2/13/17 10:00	DFW-Dallas HQ
OKAY	Lobby East 02	NO_VULNERABILITIES_DETECTED	NORMAL	172.30.21.1	00:40:8C:24:20:1	Axis	Axis	DFW-SvrRec-01	2/13/17 10:00	DFW-Dallas HQ
OKAY	Elevator A 02	NO_VULNERABILITIES_DETECTED	NORMAL	172.30.21.4	00:40:8C:24:20:4	Axis	Axis	DFW-SvrRec-01	2/13/17 10:00	DFW-Dallas HQ
OKAY	Stairwell East 02	NO_VULNERABILITIES_DETECTED	NORMAL	172.30.21.8	00:40:8C:24:20:8	Axis	Axis	DFW-SvrRec-01	2/13/17 10:00	DFW-Dallas HQ
OKAY	Training Room 02	NO_VULNERABILITIES_DETECTED	NORMAL	172.30.21.14	00:04:7D:24:30:14	Pelco	Pelco	DFW-SvrRec-01	2/13/17 10:00	DFW-Dallas HQ
OKAY	Training Room 03	CHECK_TIMEDOUT	NORMAL	172.30.21.15	00:04:7D:24:30:15	Pelco	Pelco	DFW-SvrRec-01	2/13/17 10:00	DFW-Dallas HQ
OKAY	Training Room 06	NO_VULNERABILITIES_DETECTED	NORMAL	172.30.21.18	00:04:7D:24:30:18	Pelco	Pelco	DFW-SvrRec-01	2/13/17 10:00	DFW-Dallas HQ
OKAY	Reception Desk 01	NO_VULNERABILITIES_DETECTED	NORMAL	172.30.21.2	00:40:8C:24:20:2	Axis	Axis	DFW-SvrRec-01	2/13/17 10:00	DFW-Dallas HQ

Example: On-demand password checker report

What You Get as a Beta Tester

Early access to Viakoo Password Checker

Regular review and feedback sessions

Visibility into priority of new features

Desired Feedback from You to Viakoo

Usability
(e.g. scope, reporting, format, etc)

Reporting and Alerting Process

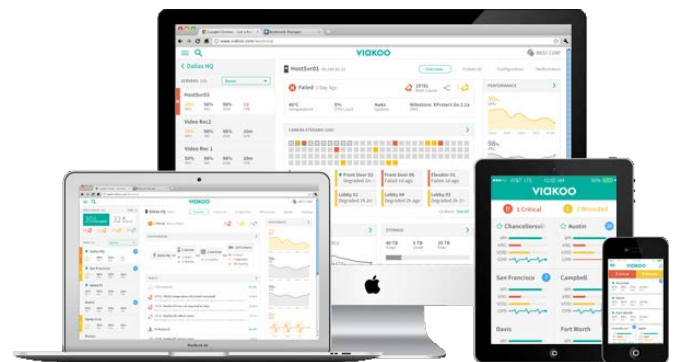
Other types of cyber-threats to be tested for

Viakoo enables proactive physical security service and maintenance

About Viakoo - The New Way

Viakoo automates service & maintenance of physical security systems and delivers verification of networked physical security system compliance.

Leveraging purpose-built technology Viakoo quickly and automatically detects physical security system failures, diagnoses problems, alerts users with repair information, and maintains historical records on operations. With Viakoo users improve physical security system reliability and performance, gain critical insight into physical security systems, eliminate gaps in video evidence, and automate reporting for compliance and auditing.



All Rights Reserved © 2017 Viakoo, Inc.